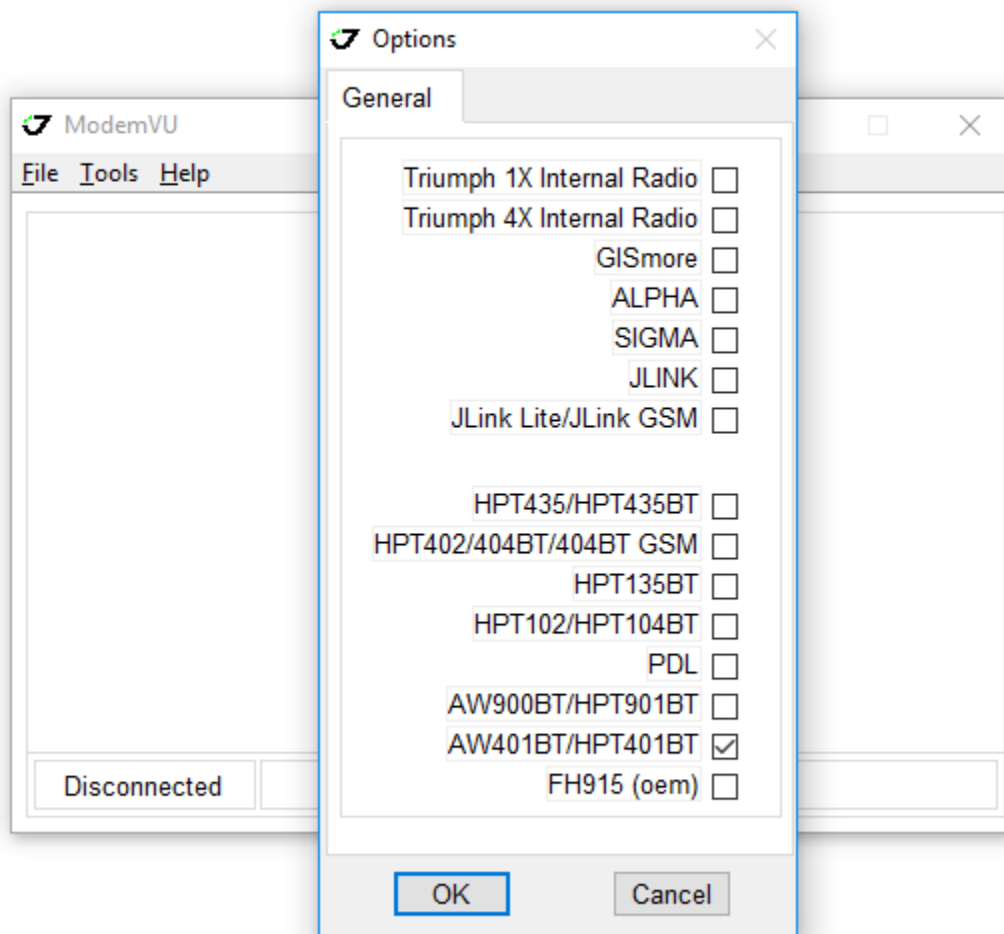


## Configuring a Javad Repeater Through ModemVU

### Setup the Repeater

The repeater radio needs to be configured by following these steps:

- 1) To configure the repeater radio, connect it to your PC through a serial port, USB port or through a virtual serial port with a serial port to USB adapter.
- 2) Run [ModemVU](#) as an administrator by right clicking on its icon and choosing “Run as administrator”.
- 3) Select the connected radio from the list and press OK.



- 4) Enter the port it is connected to and press Connect. You may need to use Window's Device Manager to determine the port.

- 5) After the connection is established change UHF Protocol to “Simplex Repeater” and select the frequency, modulation (DQPSK recommended) and bandwidth to match the parameters the base radio will be using. Press Apply once done.

