

CSD Plan - DP 529013

Survey Number	DP 529013
Surveyor Reference	
Surveyor	Symon Pieter Stamm
Survey Firm	Stamm Surveys Ltd
Surveyor Declaration	I Symon Pieter Stamm, being a licensed cadastral surveyor, certify that: (a) this dataset provided by me and its related survey are accurate, correct and in accordance with the Cadastral Survey Act 2002 and the Rules for Cadastral Survey 2010, and (b) the survey was undertaken by me or under my personal direction. Declared on 15 Oct 2018 03:48 PM

Survey Details

Dataset Description	Lots 1 and 2 Being a Subdivision of Lot 74 DPS 1083		
Purpose	LT Subdivision		
Status	Deposited	Type	Survey
Land District	South Auckland	Survey Class	Class A
Meridional Circuit	Bay of Plenty 2000		

Survey Dates

Surveyed Date	13/09/2018	Certified Date	15/10/2018
Submitted Date	15/10/2018 15:48:14	Survey Approval Date	18/10/2018
Deposit Date	15/10/2018		

Referenced Surveys

Survey Number	Land District	Bearing Correction
DPS 1083	South Auckland	-0°01'20"
DPS 69789	South Auckland	0°00'00"
DP 314032	South Auckland	0°00'00"
DP 371706	South Auckland	0°00'00"
DP 398923	South Auckland	0°00'00"
DP 509837	South Auckland	0°00'00"

Territorial Authorities

Rotorua District

Comprised In

CT SA1219/67

Created Parcels

Parcels	Parcel Intent	Area	CT Reference
Lot 1 Deposited Plan 529013	Fee Simple Title	0.0467 Ha	856476
Lot 2 Deposited Plan 529013	Fee Simple Title	0.0544 Ha	856477
Area A Deposited Plan 529013	Easement		
Total Area		0.1011 Ha	

Mark and Vector

Survey Number DP 529013

Meridional Circuit Bay of Plenty 2000

From	To	Code	Bearing	Adpt Surv	Distance	Adpt Surv	Class
IT III DPS 69789	IS IV DPS 69789	ob0	260°57'00"	M	119.62	M	
IS IV DPS 69789	IT DPS 1083	ob7	350°40'00"	A DPS 69789	20.41	A DPS 69789	
IT DPS 1083	PEG IV DPS 1083	ob8	237°38'40"	A DPS 1083	8.05	A DPS 1083	
PEG IV DPS 1083	PEG V DPS 1083	ob9	147°38'40"	A DPS 1083	18.87	A DPS 1083	
PEG V DPS 1083	PEG (12) DPS 1083	ob10	83°36'40"	A DPS 1083	18.87	A DPS 1083	
PEG (12) DPS 1083	PEG (1) DPS 1083	ob11	83°36'40"	A DPS 1083	104.20	A DPS 1083	
PEG (1) DPS 1083	PEG DPS 69789	ob13	327°38'40"	A DPS 1083	21.25	A DPS 1083	
PEG DPS 69789	IT III DPS 69789	ob14	150°26'00"	A DPS 69789	14.60	A DPS 69789	
PEG (12) DPS 1083	PEG (8) DPS 1083	ob12	173°36'40"	A DPS 1083	10.06	A DPS 1083	
PEG (8) DPS 1083	PEG (5) DPS 1083	ob15	83°36'40"	A DPS 1083	58.25	A DPS 1083	
PEG (5) DPS 1083	PEG A DP 509837	ob16	83°36'40"	A DP 509837	16.12	A DP 509837	
PEG A DP 509837	PEG 5 DP 529013	ob17	83°36'40"	A DP 509837	4.00	A DP 509837	
PEG 5 DP 529013	PEG 1 DP 529013	ob18	83°36'40"	A DPS 1083	17.17	C	Class A
PEG 1 DP 529013	PEG 4 DP 529013	ob54	83°36'40"	A DPS 1083	2.95	C	Class A
PEG 4 DP 529013	PEG (2) DPS 1083	ob19	83°36'40"	A DPS 1083	10.62	A DPS 1083	
PEG (2) DPS 1083	PEG (1) DPS 1083	ob21	327°38'40"	A DPS 1083	11.19	A DPS 1083	
IT III DPS 69789	IB 1 DP 509837	ob1	258°51'00"	M	24.58	M	
IB 1 DP 509837	PEG A DP 509837	ob22	181°02'00"	A DP 509837	13.81	A DP 509837	
CB XXVII SO 48121	IT III DPS 69789	ob27	56°12'23"	M	262.04	M	
CB XXVII SO 48121	IT XXVI SO 48121	ob28	83°35'33"	M	255.52	M	
IT XXVI SO 48121	IS II DPS 69789	ob31	83°35'33"	A DP 314032	55.12	A DP 314032	
IS II DPS 69789	CB XXV SO 48121	ob32	83°35'33"	A DP 398923	172.94	A DP 398923	
IT III DPS 69789	IB I DP 314032	ob2	140°42'00"	M	95.36	M	
IB I DP 314032	IS II DPS 69789	ob33	140°42'00"	A DP 314032	48.17	A DP 314032	
IT III DPS 69789	NAIL 2 DP 529013	ob3	179°50'50"	M	43.99	M	
NAIL 2 DP 529013	IB 1 DP 529013	ob34	191°01'40"	M	72.70	M	
IB 1 DP 529013	IT XXVI SO 48121	ob38	92°08'30"	M	49.97	M	
IB 1 DP 529013	CB XXVII SO 48121	ob39	261°31'30"	M	206.23	M	
IB 1 DP 529013	IB 1 DP 371706	ob40	245°53'20"	M	70.66	M	
IB 1 DP 371706	IB 4 DP 371706	ob41	83°38'30"	A DP 371706	17.36	A DP 371706	
IB 4 DP 371706	IT XXVI SO 48121	ob42	75°32'00"	A DP 371706	100.36	A DP 371706	
IB 4 DP 371706	AD 4A DP 371706	ob43	341°29'00"	A DP 371706	18.74	A DP 371706	
AD 4A DP 371706	PEG 4B DP 371706	ob44	83°36'40"	A DP 371706	3.00	A DP 371706	
PEG 4B DP 371706	PEG (4) DPS 1083	ob45	83°36'40"	A DPS 1083	20.12	A DPS 1083	
PEG (4) DPS 1083	PEG (3) DPS 1083	ob46	83°36'40"	A DPS 1083	20.12	A DPS 1083	
PEG (3) DPS 1083	PEG (9) DPS 1083	ob47	83°36'40"	A DPS 1083	20.12	A DPS 1083	
PEG (9) DPS 1083	PEG (10) DPS 1083	ob48	353°36'40"	A DPS 1083	50.29	A DPS 1083	
PEG (10) DPS 1083	PEG (9) DPS 1083	ob49	263°36'40"	A DPS 1083	5.19	A DPS 1083	Class A
PEG (9) DPS 1083	UNMK 1 DP 509837	ob50	353°36'40"	A DP 509837	18.86	A DP 509837	Class A

Mark and Vector

Survey Number DP 529013

Meridional Circuit Bay of Plenty 2000

From	To	Code	Bearing	Adpt Surv	Distance	Adpt Surv	Class
UNMK 1 DP 509837	PEG 3 DP 529013	ob51	353°36'40"	A DP 509837	3.83	C	Class A
PEG 3 DP 529013	PEG 5 DP 529013	ob52	353°36'40"	A DP 509837	27.60	C	Class A
PEG 4 DP 529013	PEG (7) DPS 1083	ob20	173°36'40"	A DPS 1083	50.29	A DPS 1083	Class A
PEG (7) DPS 1083	PEG (10) DPS 1083	ob23	263°36'40"	A DPS 1083	14.93	A DPS 1083	Class A
PEG (7) DPS 1083	PEG (6) DPS 1083	ob24	83°36'40"	A DP 371706	5.19	A DPS 1083	
PEG (6) DPS 1083	DISC C DP 314032	ob25	83°36'40"	A DP 371706	20.12	A DPS 1083	
DISC C DP 314032	IB I DP 314032	ob26	109°41'00"	A DP 314032	31.92	A DP 314032	
CB XXVII SO 48121	IS IV DPS 69789	ob29	38°07'50"	M	161.37	M	
PEG 3 DP 529013	PEG 2 DP 529013	ob53	83°04'00"	C	14.16	C	Class A
PEG 1 DP 529013	UNMK 1 DP 529013	ob55	173°36'40"	C	20.12	C	Class A
UNMK 1 DP 529013	DISK DP 529013	ob57	173°36'40"	C	4.14	C	Class A
DISK DP 529013	UNMK 2 DP 529013	ob56	216°49'00"	C	3.65	C	Class A
UNMK 2 DP 529013	PEG 2 DP 529013	ob58	216°49'00"	C	0.74	C	Class A
IT III DPS 69789	PEG 4 DP 529013	ob4	181°26'00"	M	15.89	M	
IT III DPS 69789	PEG 1 DP 529013	ob5	191°37'00"	M	16.55	M	
IT III DPS 69789	PEG 5 DP 529013	ob6	228°22'00"	M	27.28	M	
NAIL 2 DP 529013	PEG 3 DP 529013	ob35	264°53'00"	M	17.50	M	
NAIL 2 DP 529013	PEG 2 DP 529013	ob36	272°34'00"	M	3.38	M	
NAIL 2 DP 529013	DISK DP 529013	ob37	348°28'00"	M	3.74	M	
UNMK 2 DP 529013	UNMK 3 DP 529013	ob59	353°36'40"	C	6.80	C	Class A
UNMK 3 DP 529013	UNMK 1 DP 529013	ob60	83°37'00"	C	2.50	C	Class A
CB XXVII SO 48121	IB 1 DP 371706	ob30	89°22'30"	M	139.49	M	

*** End of Report ***

Land Registration District

South Auckland

Plan Number

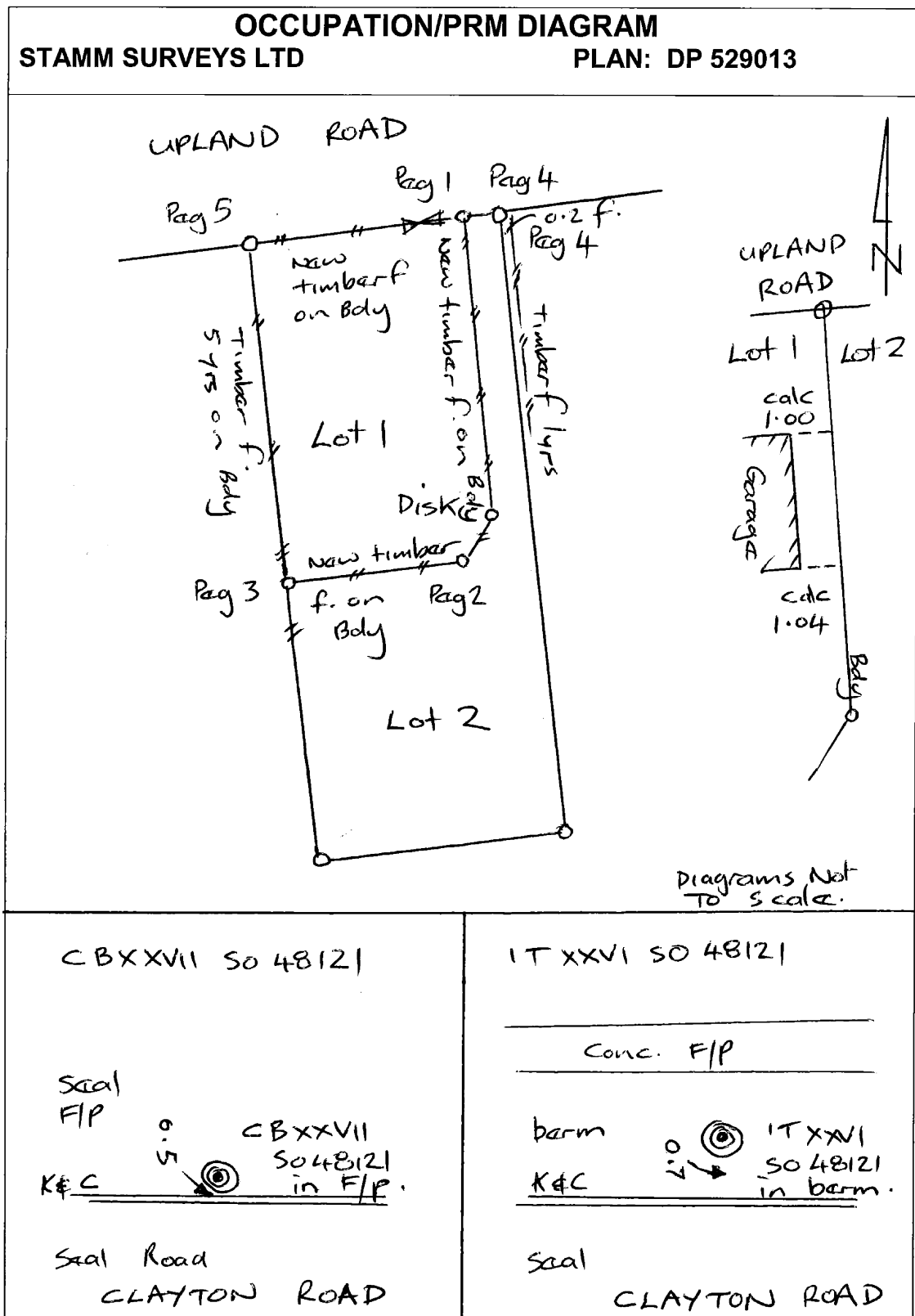
DP 529013

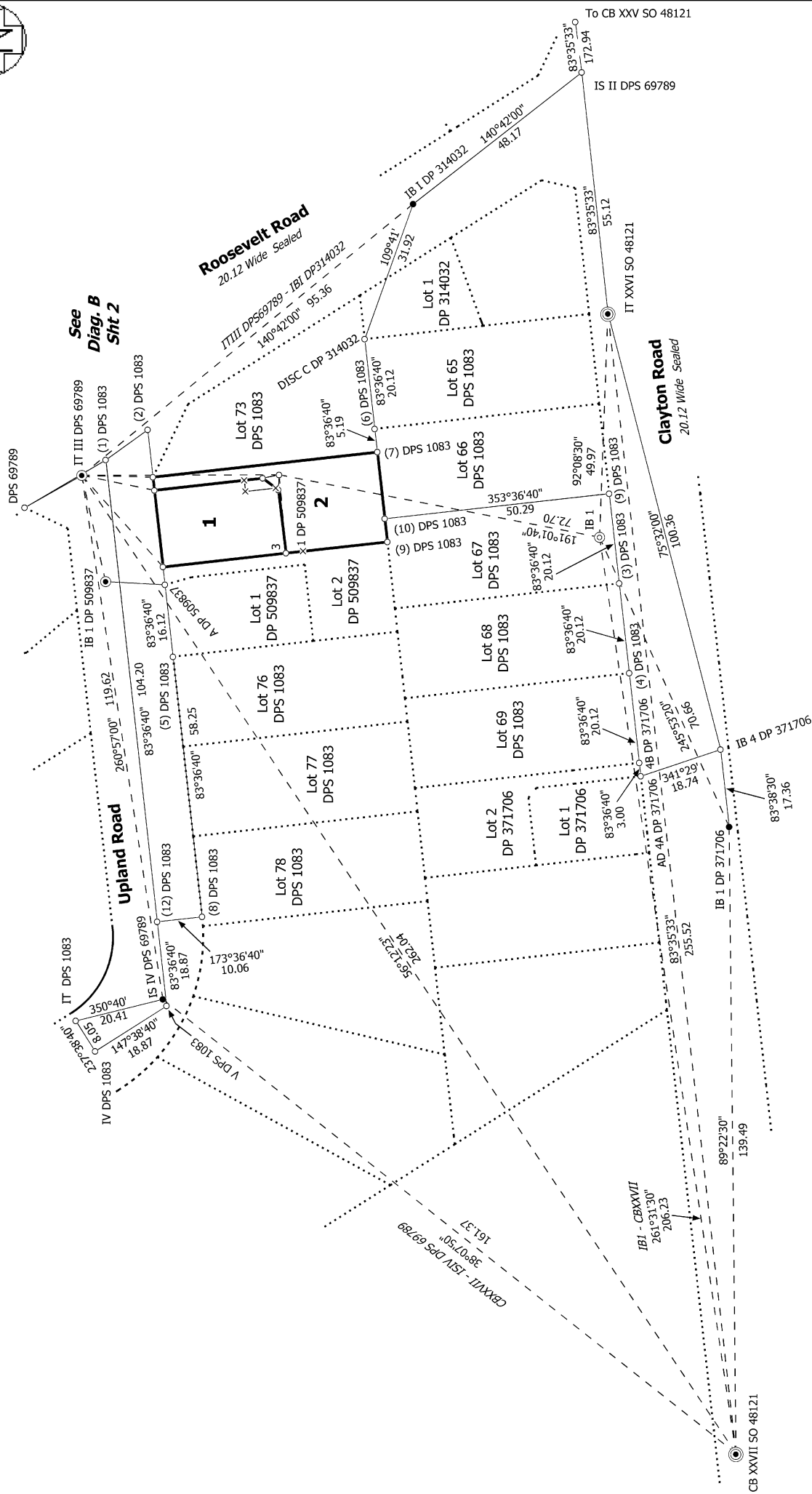
Territorial Authority

Rotorua District Council

Ref: [REDACTED]

Memorandum of Easement			
Purpose	Shown	Servient Tenement	Dominant Tenement
Right to Drain Water	A	Lot 1 DP 529013	Lot 2 DP 529013





Ref 18053

S 1/2

Land District: South Auckland

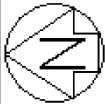
Lots 1 and 2 Being a Subdivision of Lot 74 DPS 1083

Surveyor: Symon Pieter Stamm
Firm: Stamm Surveys Ltd
Survey Date: 13/09/2018

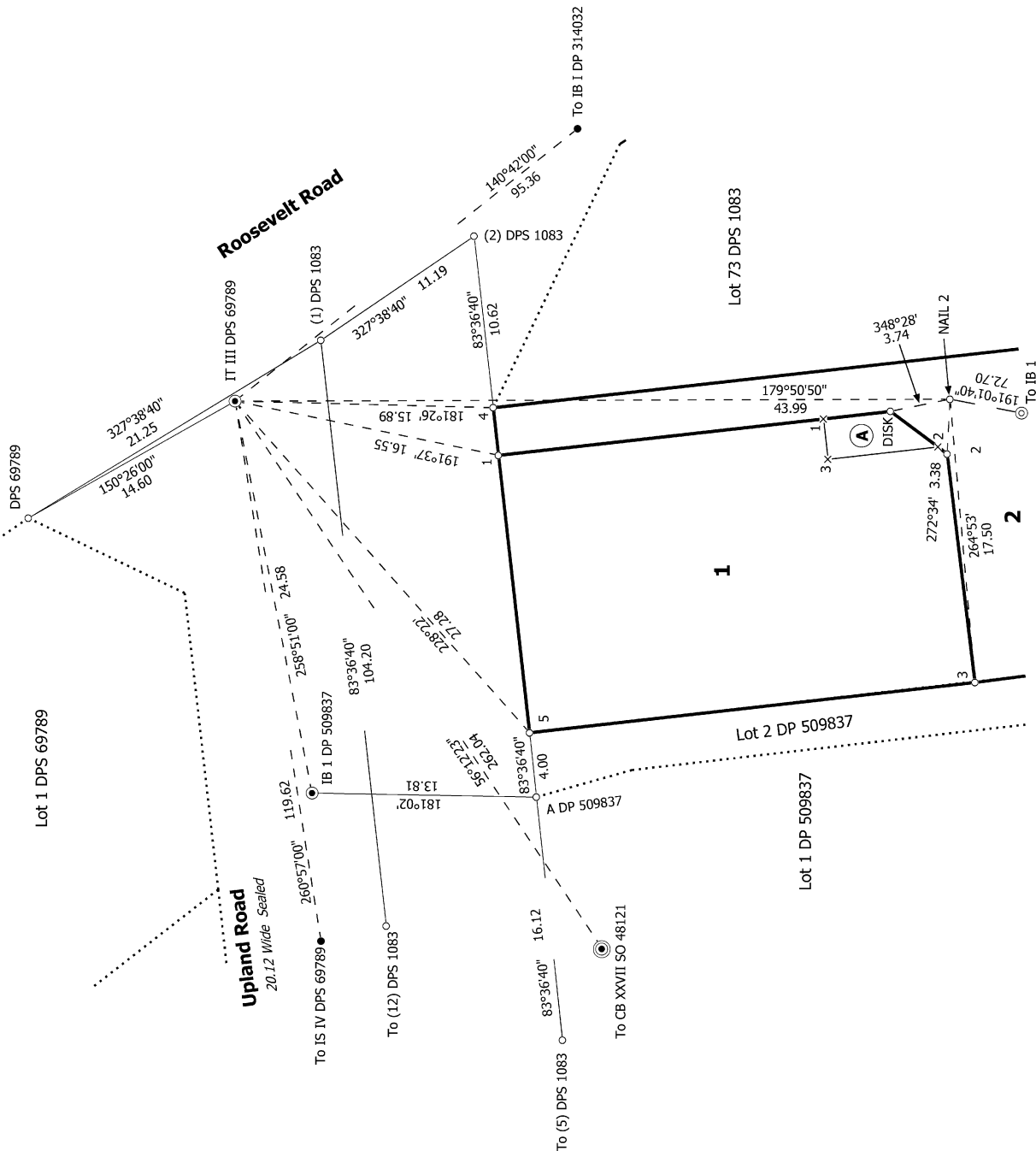
CSD Plan
DP 529013

Digitally Generated Plan
Generated on: 19/10/2018 11:17am Page 6 of 8

Deposited on: 15/10/2018



Diag. B



Land District: South Auckland	Lots 1 and 2 Being a Subdivision of Lot 74 DPS 1083	Surveyor: Symon Pieter Stamm Firm: Stamm Surveys Ltd Survey Date: 13/09/2018	CSD Plan DP 529013 Deposited on: 15/10/2018
Digitally Generated Plan Generated on: 19/10/2018 11:17am Page 7 of 8			



T 1/1

Land District: South Auckland

Lots 1 and 2 Being a Subdivision of Lot 74 DPS 1083

Surveyor: Symon Pieter Stamm
Firm: Stamm Surveys Ltd
Survey Date: 13/09/2018

CSD Plan
DP 529013

Digitally Generated Plan
Generated on: 19/10/2018 11:17am Page 8 of 8

Deposited on: 15/10/2018