

Muscatine County, Iowa

Horizontal Datum: **NAD 83(2011)** - Vertical Datum: **NAVD 1988**

Iowa State Plane South Zone (1402)

Iowa Regional Coordinate System Zone 14 Burlington

US Survey Feet

2014

Point Name: **4**

Designation: Louisa Co. GPS Control Pt 2006-004 (Set by DCI in 2006)

NAD 83(NA2011) Latitude: **N41°20'04.93573"** Longitude: **W91°11'56.77954"**

NAVD 88 Ortho Height: **733.210sft** Ellip. Ht: **625.108sft** **Geoid12A**

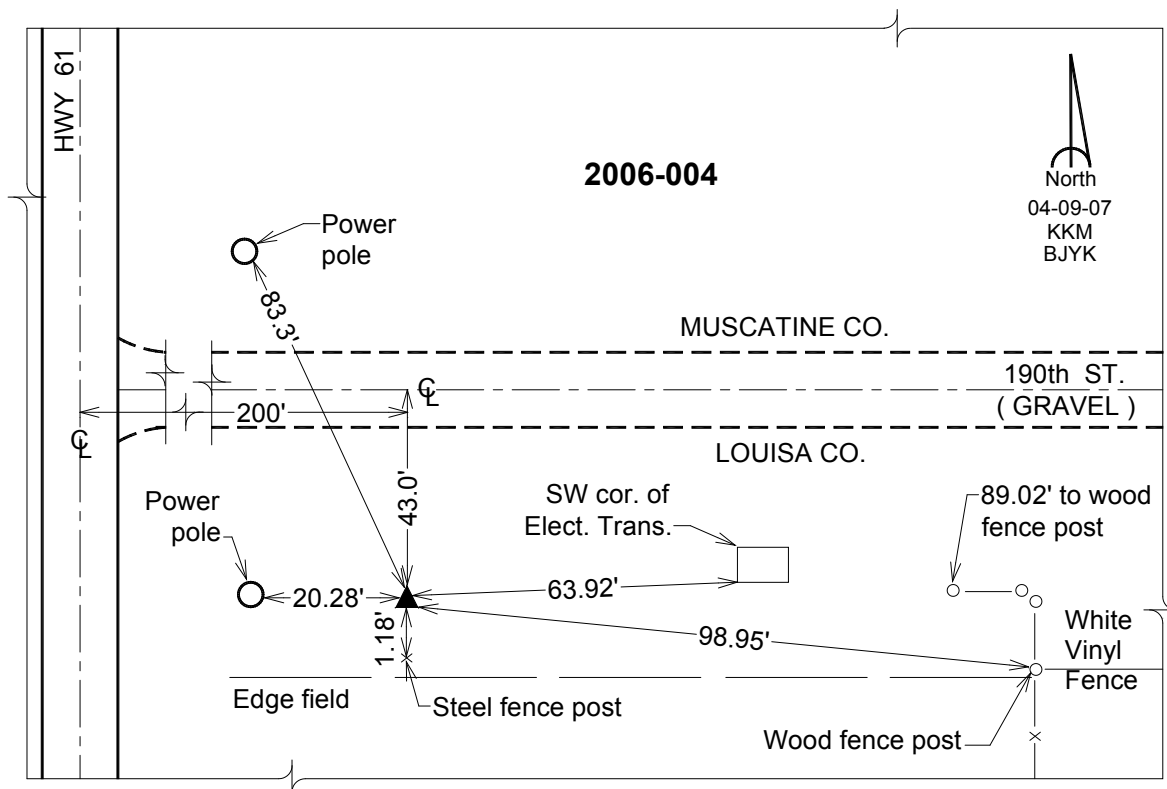
Iowa South Zone (1402) Northing: **494633.985sft** Easting: **2272212.336sft**

Mapping Angle: **1°30'56"** Combination Scale Factor: **0.999921262**

IaRCS Zone 14 Northing: **6595208.303sft** Easting: **24513977.552sft**

Mapping Angle: **0°02'01"** Combination Scale Factor: **0.9999883944**

Monument Type: Berntsen Top Security Rod Monument with a 2-1/2" dia. domed survey cap and permanent magnet encased in a white PVC pipe with a NGS style aluminum access cover.



This document was prepared by DCI on December 5, 2014 for use by Muscatine County, Iowa