

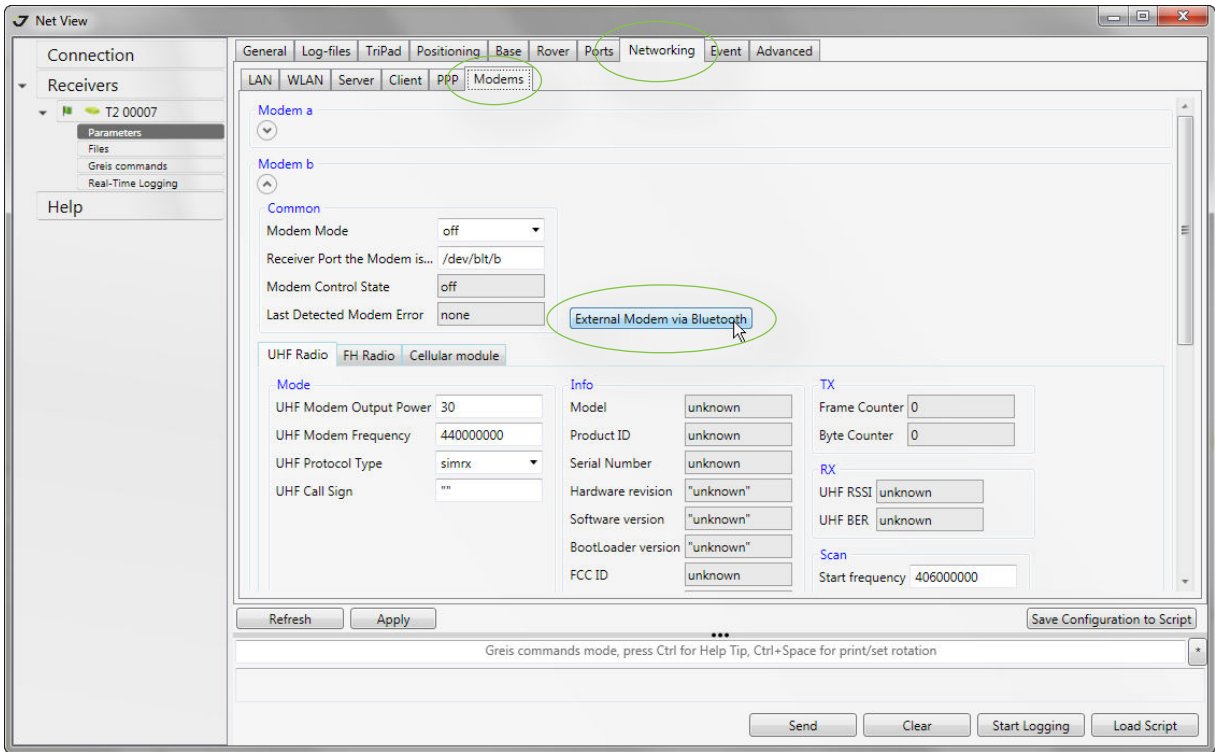


Pairing the Radio

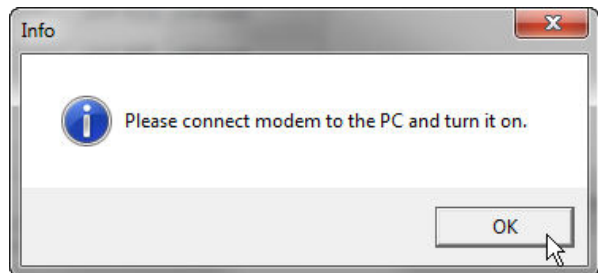
Your radio (HPTxxxBT) and the **TRIUMPH-2** receiver come from the factory already paired and ready to communicate with each other out of the box. Once powered, both the radio and receiver will show their blue LEDs lit indicating their linked communications. Usually this only takes a few seconds. Rarely, if after waiting a few minutes, the receiver fails to show its Bluetooth indicator LED light as blue, the receiver and the radio may have become unpaired. Should this occur, **NetView** is available to reestablish their pairing. It can also be used in establishing a pairing with another radio (HPTxxxBT).

Procedure

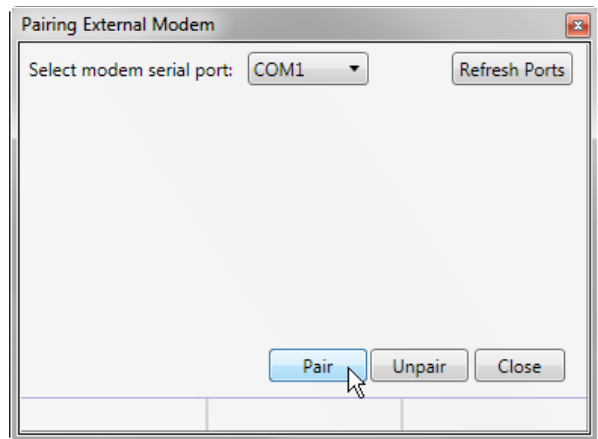
1. Connect the **TRIUMPH-2** to your PC and power it on
2. Connect the HPTxxxBT to your PC via a serial port or through a USB to serial adapter and power it on, be sure to connect the antenna.
3. Run NetView and connect to the **TRIUMPH-2**
4. Click Parameters/Networking/Modems/Modem b and click **External Modem via Bluetooth**



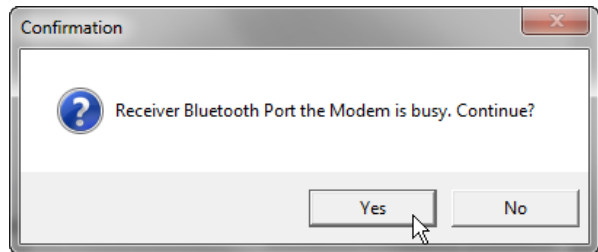
5. Click **OK**



6. Select the COM port for the HPTxxxBT modem and click ***Pair***



7. If you are presented with this screen, click ***Yes*** to continue.
If this screen does not appear skip to the next step



8. Monitor the progress as the pairing process is executed
9. When completed, it will display the word Paired in the lower left corner. Now you can click **Close**
10. The Bluetooth LED on both the TRIUMPH-2 and HPTxxxBT should now be blue. Take them outside and put them to work!

