

In the Collect Prepare screen, select the action profile that you want to use and make sure the following settings are made:

2018.043	SURVEY	2018.043
1. Project	2. Page	Coordinate System
DefTag	DefCode	---
3. ShapeTag	Code	4. Code Attributes
L096		4.92 ft
5. Point Name	6. Point Description	7. Antenna Height
Review	View	Precise To... 08:08 Next

Make sure that Position Accuracy is set to Accept All:

Action Setup (Precise Topo)

Start with Start Button	Stop After 10 epochs
Only RTK Fixed	Verify [2] with V6 reset
Options	What To Record
Level Offset	Survey Tones
Activate Post-Processing option after Never	Recall
Esc	OK

Position Accuracy

<input type="radio"/> Only RTK solutions in Fixed mode (sub centimeter level)	<input type="radio"/>	
<input type="radio"/> RTK fixed, Float & DGPS (sub meter level)	<input type="radio"/>	
<input checked="" type="radio"/> Accept all, including Standalone (few meter level)	<input checked="" type="radio"/>	
Accept PDOP All	Accept HRMS All	Accept VRMS All
Maximum Corrected Tilt Angle 30 °	Maximum Uncorrected Tilt Angle 5 °	
Cancel	Apply	

Make sure that under What to Record that RAW GNSS Data is checked:

On/Off	Settings	Record in	Share
RAW GNSS Data <input checked="" type="checkbox"/>	1 Hz	Internal Memory	
Front Camera <input type="checkbox"/>	S[A]	Internal Memory	
Bottom Camera <input type="checkbox"/>	S[A]	Internal Memory	
Voice <input type="checkbox"/>	3 Sec E	Internal Memory	
Screenshots <input checked="" type="checkbox"/>	A1 A2	Internal Memory	No

Record RTN Base Point ☐

Cancel Apply

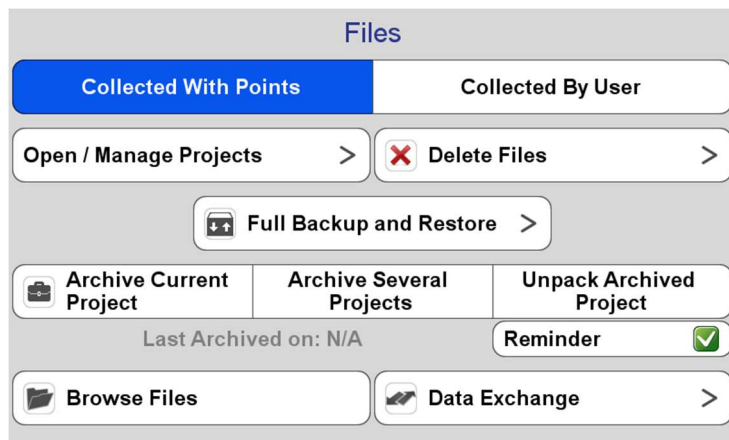
Set a White Box for GNSS Recording so that you can see how long you've been collecting data. Use the Start and Stop button to begin and end a session.

NONE	Accept / Reject St...	Attributes	Audio Record	Azimuth / Bearing	Base / Rover St...
Base Guard	Base Ref. Frame	Bottom Camera	Code	Coord. System	Distance to Last
Distance to Last (...)	GNSS Recording	HRMS	J-Tip Sound	Level Vial Camera	Offsets
PDOP	PDelta	PDelta2	PDelta3	Page	Photo Record
Point Description	Point Name	Point Symbol	RTK Charts	Recall Profile	Recording Statistics

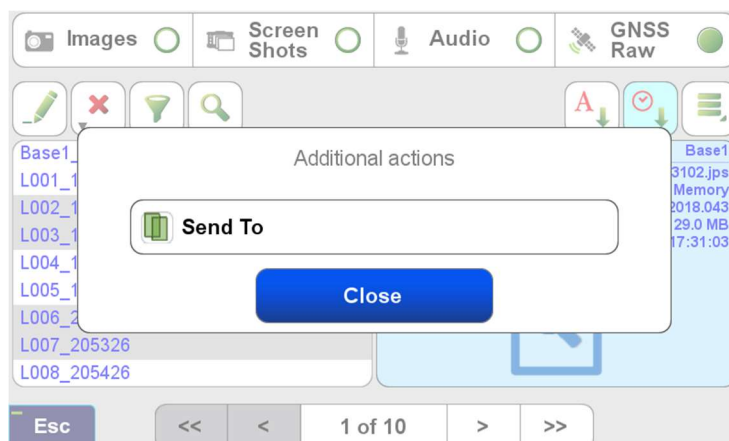
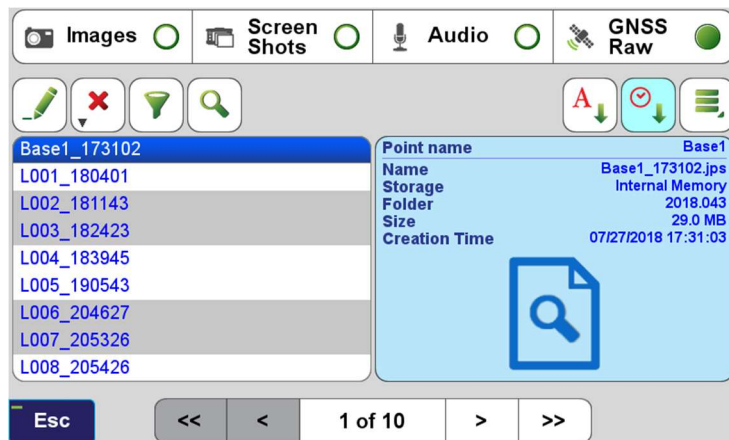
Esc << < 1 of 2 > >>

When you've finished collecting data you can get to the data by one of two methods.

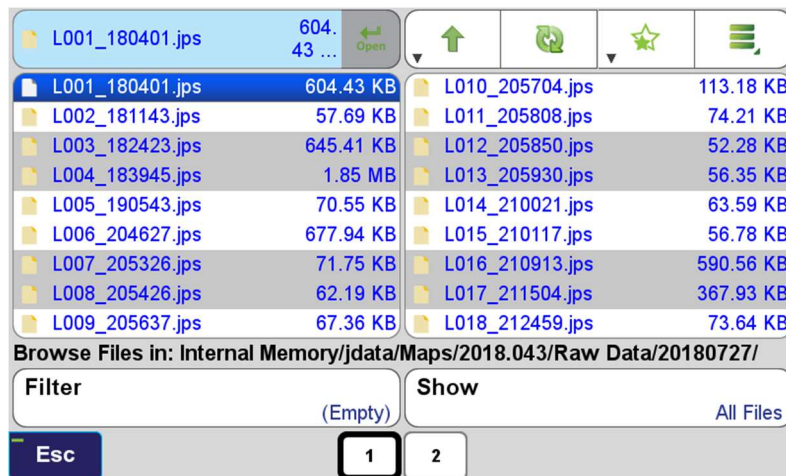
First, from the Home Screen you can go to Files>Collected with Points:



Select GNSS Raw at the top of the screen and then select the resource button (three green bars) and Send To in order to send files one at a time to a thumb drive:



Or you can use the File Browser to copy the entire folder of files to a thumb drive:



The path to the files for Windows Operating System will be:

Internal Memory/VS Data/Maps/[Project Name]/Raw Data

Or

SD Card/VS Data/Maps/[Project Name]/Raw Data

Depending on whether you have the raw data set to be stored internally or to the SD card in the Action Profile Setting “What to Record”.

The above screen capture is from the newly released Linux Operating System and is stored in:

Internal Memory/jdata/Maps/[Project Name]/Raw Data/[Date of Observation]

Or

SD Card/jdata/Maps/[Project Name]/Raw Data/[Date of Observation]

Note that to access the internal memory of the Triumph LS from the file browser, you will need to go to the Second Home Screen>System>Customize and check on Browse Internal Memory.