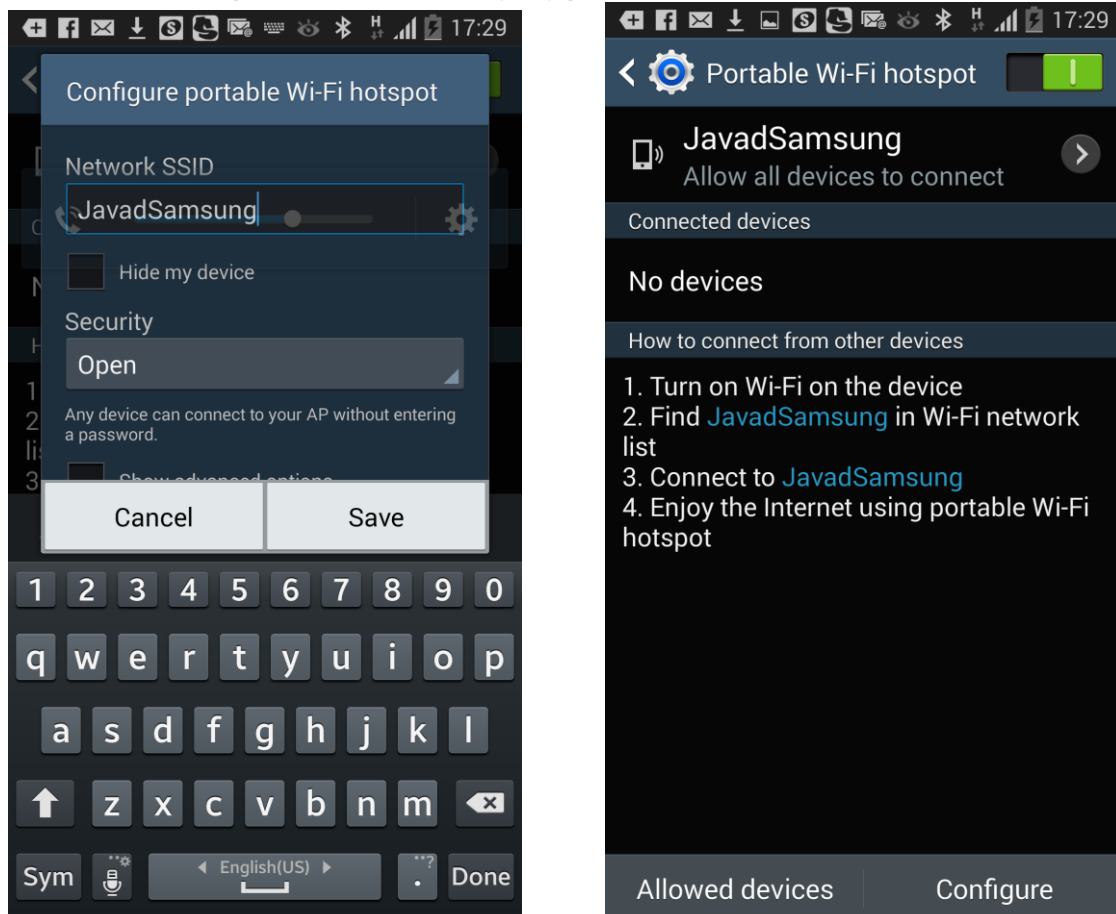


Then you connect your Android device to Triumph-2, you set your Android device as an Mobile Access Point. And receiver connects to the Access Point. I would recommend to use unencrypted WiFi network to simplify the process. Each Android device vendor has its own screens to setup Mobile Access Point (aka HotSpot). For example for Samsung you go to Settings | Portable HotSpot | Portable WiFi HotSpot | Configure. Set name for your Access point and select Open for Security type. And Now set check control On.

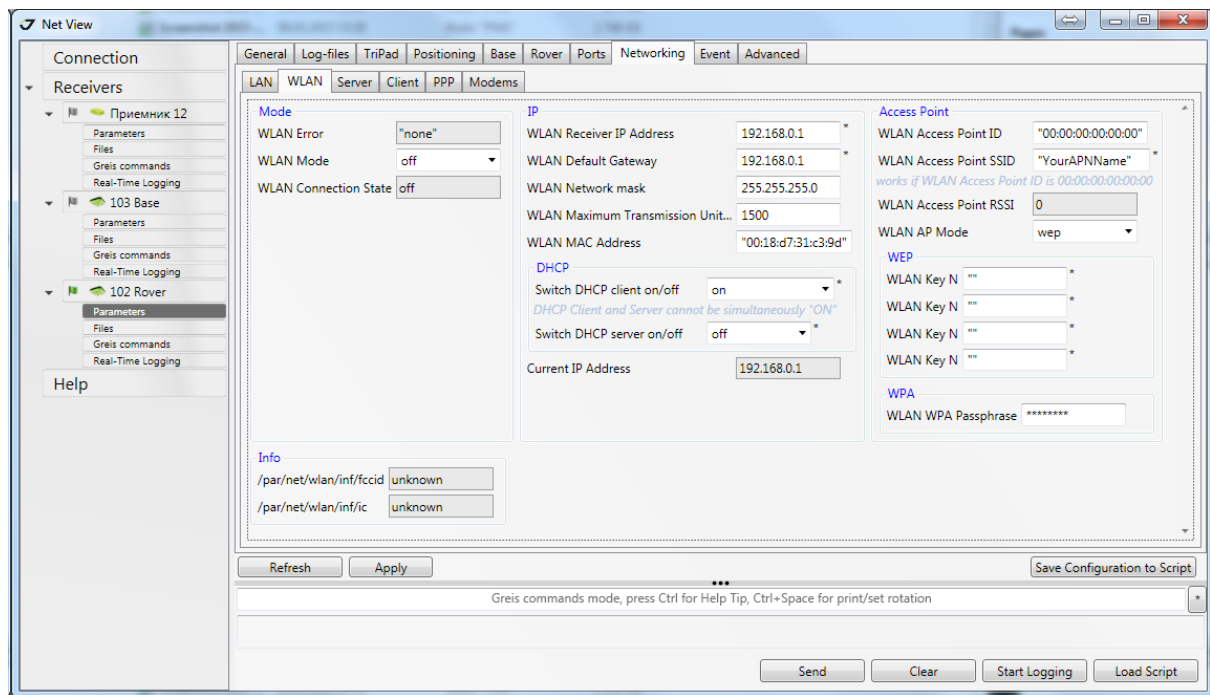


That is it to setup Mobile Access Network.

Further you can use NetView to configure Triumph-2 to connect to the network.

Connect Triumph-2 to NetView. Go to Parameters | Networking | Server and set password to access to the receiver (I would recommend use default 1234 password there).

Then go to Parameters | Network | WLAN and set all items as on the attached screen:



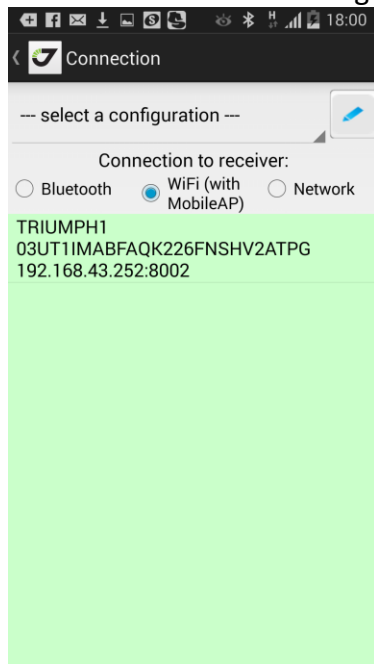
Press Apply to setup.

Or you can use following GREIS commands:

```
%1%set,/par/net/password,»1234»
%2%set,/par/net/wlan/ip/addr,»192.168.0.1»
%3%set,/par/net/wlan/ip/gw,»192.168.0.1»
%4%set,/par/net/wlan/ip/mask,»255.255.255.0»
%5%set,/par/net/dhcp/client/mode,on
%6%set,/par/net/dhcp/server/mode,off
%7%set,/par/net/wlan/ap/mode,wep
%8%set,/par/net/wlan/ap/key1,»»
%9%set,/par/net/wlan/ap/key2,»»
%10%set,/par/net/wlan/ap/key3,»»
%11%set,/par/net/wlan/ap/key4,»»
%12%set,/par/net/wlan/ap/ssid,»YourAPSSID»
%13%set,/par/net/wlan/mode,on
and reset receiver with following command
%14%set,/par/reset,yes
```

Or you can do much simpler way – just connect your Javad Mobile Tools to the receiver with Bluetooth and press «Reconnect with WiFi» button in the connection screen. JMT reprogramms the receiver to be connectable to your mobile AP.

Then return back to main connection screen in JMT and select WiFi (with Mobile AP) radio button and JMT searches for receivers in the local network. And then it shows following screen:



JMT stores it for further using without network search.